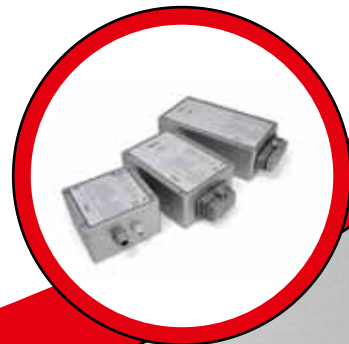


LRC^{LO}

CATTRON CONTROL[®]

A versatile radio controller for shunters. Advanced dual-processor electronics protected in an ergonomic and robust housing for demanding industrial environments.

- High safety class through redundant hardware and software structure
- Suited for applications requiring EN ISO 13849-1 Performance Level d
- Approvals and frequencies for worldwide deployment
- System configuration via external TransKey (RFID)
- Application-specific layout
- Reverse-engraved front plate - extremely hard wearing for use in industrial environments
- Housing made of high impact-resistant polycarbonate resin



Up to
32+2
commands

CATTRON
theimeg[™]

Industrial Radio Remote Controls

- Acoustic and optical undervoltage warning
- Tilt switch as operator safety feature
- Operator vigilance feature (optional)
- Housing made of Lexan* EXL resin - extreme high impact resistance and form stability
- Protection class IP65

TECHNICAL DATA AND SPECIFICATIONS

RF

Frequency range/power	335 MHz (< 1 mW ERP) 418 MHz (< 10 mW ERP) 433 MHz (< 10 mW ERP) 447 MHz (< 10 mW ERP) 869 MHz (< 5 mW ERP) 915 MHz (FCC part 15)
Transmission speed	4.8 to 20 kbit/s
Modulation	FM
RF channel spacing	12.5 kHz; 25 kHz and others
Antenna	external

Electronics

Commands	up to 32 commands + 2x STOP
Digital circuitry	Dual-processor technology
System address	24 bits = 16 million addresses
Power supply	rechargeable battery, NiCD, 10.8 V / 1600 mAh Autonomy > 12h at 100% uninterrupted use

Standards

Safety standards	EN 13849-1 Performance Level d
Protection class	IP65

* Trademark of SABIC Innovative Plastics IP BV

Mechanical Data

Weight	approx. 1.9 kg
Dimensions	257 x 91.5 x 183 mm (L x W x H)
Housing	Lexan* EXL polycarbonate resin, Standard colour yellow
Operating temperature	-20° to +70°

Operation and Indication

Layout	customized, 1 x dual-axis joystick, switches and pushbuttons
TransKey	System configuration, address and RF channel
Indication	3 LEDs for status display
Buzzer	Low voltage indication and tilt switch feature, operator vigilance (optional)

Accessories

Batteries	2 x Rechargeable batteries NiCD, 10.8 V / 1600 mAh
Battery charger	Processor-controlled charger 24 V DC or 110/230 V AC, 50–60 Hz

USA

Cattron-Theimeg International Inc.
58 West Shenango Street
US Sharpsville, Pennsylvania 16150
Phone: +1-724-962-3571
Fax: +1-724-962-4310
mail@cattron-theimeg.com

SOUTH-AFRICA

Cattron-Theimeg Africa (Pty.) Ltd.
24 O'Reilly Merry Road
ZA 1518 Rynfield
Benoni, Gauteng
Phone: +27-11-425-1123
Fax: +27-11-849-5717
cattron@cattronsa.com

CANADA

Cattron-Theimeg Canada Ltd.
150 Armstrong Avenue, Units 5 - 6
CA Georgetown, Ontario L7G 5G8
Phone: +1-905-873-9440
Fax: +1-905-873-9449
salescdn@cattron-theimeg.com

BRAZIL

Cattron-Theimeg Americas Ltda.
Rua Antonio Rodrigues de Carvalho 435
BR Campinas
SP CEP 13033-220
Phone: +55-19-3243-7803
Fax: +55-19-3243-9258
cattronamericas@cattron-theimeg.com

EUROPE

Cattron-Theimeg Europe GmbH & Co. KG
Krefelder Straße 423-425
DE 41066 Mönchengladbach
Phone: +49-2161-6363-0
Fax: +49-2161-6363-100
info@theimeg.de

UNITED KINGDOM

Cattron-Theimeg UK Ltd.
Riverdene Industrial Estate, Molesey Road
Hersham
Surrey KT12 4RY
Phone: +44-1932-247511
Fax: +44-1932-220937
sales@cattronuk.com